



SIMPLE LIFE



SIMPLE LIFE



Era Mill Drive, Rochdale, OL11

£1,345 PCM

Norwich Green is a development of 70 properties backing onto the Rochdale Canal, surrounded by amenities and transport links.

The Weaver is a beautifully designed, modern 3 bedroom family home. The downstairs offers an open plan kitchen/dining area with a range of contemporary fitted cabinets with integrated appliances. To the rear of the house the living room has a set of French windows which overlook and open onto the back garden, creating a light and spacious environment.

Upstairs there is a generously proportioned master bedroom with fitted, mirrored wardrobes. Additionally there are two further bedrooms to the front of the house as well as a family bathroom, offering great space for young couples and families alike.

In the surrounding vicinity of the site are a range of shops including the Rochdale Central Retail Park as well as an Iceland. Leisure activities are within easy reach whether that's the Kingsway Park Sports Centre, or the Odeon cinema, offering a range of activities for both sport and recreation.

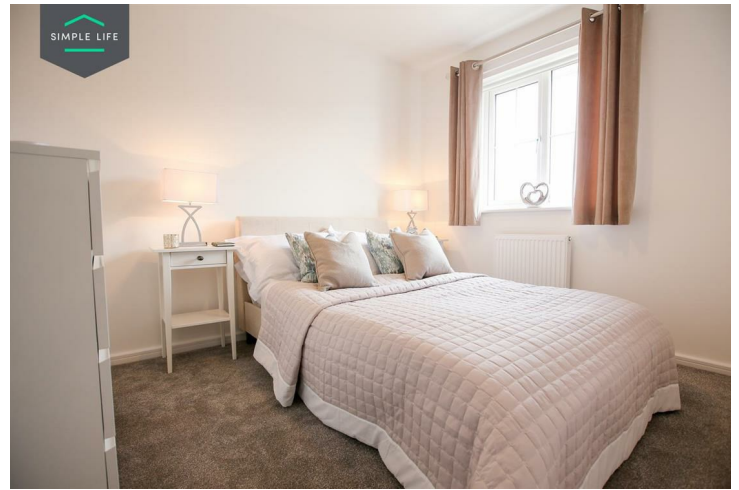
In terms of education, Norwich Green is well placed to access high quality schools. There are 23 Ofsted 'Good' rated primary schools within 3 miles, and a further 16 Good or Outstanding secondaries within 5, meaning your family has the space to grow from your new home.

From the development, Rochdale Station and Tram Stop are less than 5 minutes' walk away, opening up access to Manchester City Centre and the wider area.

To visit the site, postcode OL11 1LP brings you to Norwich Street with the site at the end.

Deposit: £1550
Holding deposit: £310
Unfurnished
Council Tax: B
Available 2nd April 2026





Key Features

- Private driveway
- Fitted wardrobes to master bedroom
- Fridge freezer
- Oven and hob
- Dark ash style worktops
- Security alarm system
- Dishwasher
- Washing/drying machine
- Light wash wood effect flooring
- Modern, white kitchen units

Location

